

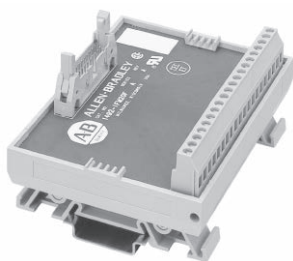
Programmable Controller Wiring Systems

Overview

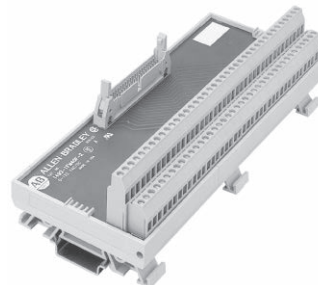
Digital Interface Modules (IFMs)

Feed-Through

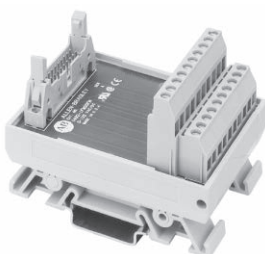
Feed-through IFMs provided the same capability as normal terminal blocks, but in a more condensed package.



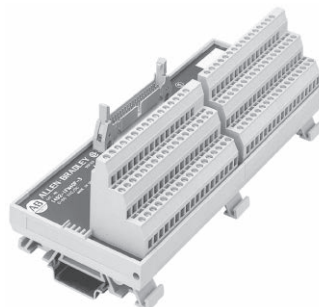
Feed-through Standard
For 20-point: Cat. No. **1492-IFM20F**
For 40-point: Cat. No. **1492-IFM40F**



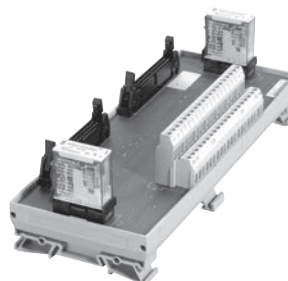
Feed-through Extra Terminal Products
For 20-point: Cat. No. **1492-IFM20F-2**
For 40-point: Cat. No. **1492-IFM40F-2**



Feed-Through Narrow
Cat. No. **1492-IFM20FN**



Feed-through Sensor Terminal Products
For 20-point: Cat. No. **1492-IFM20F-3**
For 40-point: Cat. No. **1492-IFM40F-3**

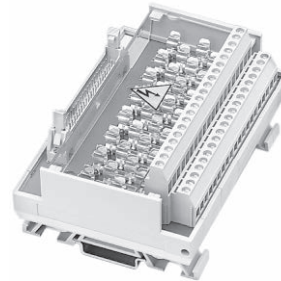
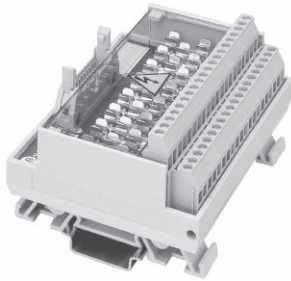


Safety Integrity Level (SIL 2)
Cat. No. **1492-TIFM40F-F24-2**

Digital Interface Modules (IFMs)

Fusible

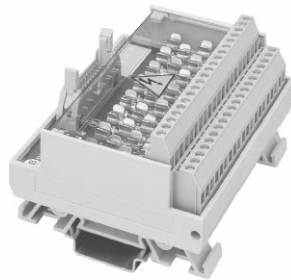
Fusible modules provide a convenient method of adding overcurrent protections into your programmable controller wiring. These modules have 5 x 20 fuse holders on-board and are available with and without blown fuse indication. The 24V, 120V, and 240V blown fuse indicators reduce the troubleshooting time to locate and replace a blown fuse on the IFM. Fusible modules have an easy-to-remove, transparent plexiglass cover that prevents objects from contacting fuse circuitry under normal operation. Removal of fuses from the standard fuse holder is aided by fuse pullers (fuses not provided). The fusible modules also have two or four terminals per I/O point to create a power bus for input and output load connections. Fusible modules are available in both isolated (Cat. No. 1492-IFM20F-FS24-2) and nonisolated (Cat. No. 1492-IFM20F-F24-2) versions. There are a select number of fusible IFMs available for input modules provided. The fusible modules also have two or four terminals per I/O point to create a power bus for input and output load connections. Fusible modules are available in both isolated (Cat. No. 1492-IFM20F-FS24-2) and nonisolated (Cat. No. 1492-IFM20F-F24-2) versions. There are a select number of fusible IFMs available for input modules.



Fused Extra Terminals

For 20-point: Cat. No. **1492-IFM20FS-F120-4**,
1492-IFM20FS-F120A-4, **1492-IFM20FS-F240-4**

For 40-point: Cat. No. **1492-IFM40FS-F24-4**, **1492-IFM40FS-F24A-4**,
1492-IFM40FS-F120-4, **1492-IFM40FS-F120A-4**,
1492-IFM40FS-F240-4, **1492-IFM40F-FS240A-4**



Fused Extra Terminals

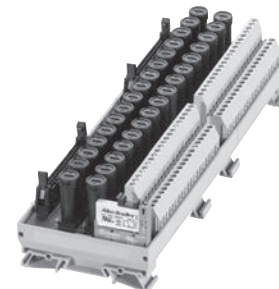
For 20-point: Cat. No. **1492-IFM20F-F-2**, **1492-IFM20F-F24-2**,
1492-IFM20F-F24A-2, **1492-IFM20F-F120-2**, **1492-IFM20F-F120A-2**,
1492-IFM20F-F240-2, **1492-IFM20FS-F-2**, **1492-IFM20FS-F24-2**,
1492-IFM20FS-F24A-2

For 40-point: Cat. No. **1492-IFM40F-F-2**, **1492-IFM40F-F24-2**,
1492-IFM40F-F120-2, **1492-IFM40FS-F-2**, **1492-IFM40FS-F24-2**,
1492-IFM40FS-F120-2, **1492-IFM40FS-F24-4**, **1492-IFM40FS-F24A-4**,
1492-IFM40FS-F120-4, **1492-IFM40FS-F120A-4**, **1492-IFM40FS-F240-4**



**40-pin cable connector Isolated Fusible module
(no fuse blown indication): Cat. No. 1492-IFM40F-FS-2**

**40-pin cable connector Isolated Fusible module with 24V blown fuse
indication: Cat. No. 1492-IFM40F-FS24A-2**



**Safety Integrity Level (SIL2)
Cat. No. 1492-TIFM40F-F24A-2**

Programmable Controller Wiring Systems

Bulletin 1756 ControlLogix Modules

Digital IFMs and Cables for Bulletin 1756 ControlLogix 16-point Isolated and 32-point I/O Modules

| Voltage [V] | Term. per I/O | Description | Fixed Terminal Block Cat. No. | Removable Terminal Block Cat. No. | RTB Plugs \clubsuit Cat. No. | Bulletin 1756 ControlLogix I/O Module | | | | | | | | | | | | | | | | | |
|---|---------------|------------------------|----------------------------------|--------------------------------------|-----------------------------------|--|------------|------------|-----------|-----------|-----------|------------|------------|------------|-------------|-----------------|-----------------|-----------------|-----------|------------|-----------|------------|-----------|
| | | | | | | 1756-IA16I | 1756-IB16D | 1756-IB16I | 1756-IA32 | 1756-IB32 | 1756-IV32 | 1756-IH16I | 1756-IM16I | 1756-OA16I | 1756-OB8EI | 1756-OB16D | 1756-OB16I | 1756-OB16IS | 1756-OB32 | 1756-OV32E | 1756-OH8I | 1756-OW16I | 1756-OX8I |
| | | | | | | Digital Cable Cat. No. Suffix \blacktriangleleft | | | | | | | | | | | | | | | | | |
| Feed-through | | | | | | | | | | | | | | | | | | | | | | | |
| 24... 120 | 1 | Standard | 1492-IFM40F | 1492-RIFM40F | 1492-RTB20 \clubsuit | Y | Y | Y | Z | Z | Z | Y | | Y | Y | Y | Y | Z | Z | Y | Y | Y | |
| | 2 | Extra Terminals | 1492-IFM40F-2 | 1492-RIFM40F-2 | 1492-RTB20 \clubsuit | | Y | | Z | Z | Z | | | | Y | | | Z | Z | | | | |
| | 3 | Sensor | 1492-IFM40F-3 | — | — | | | | | Z | Z | | | | | | | | | | | | |
| LED Indicating | | | | | | | | | | | | | | | | | | | | | | | |
| 24 | 1 | Standard | 1492-IFM40D24 | 1492-RIFM40D24 | 1492-RTB20 \clubsuit | | | | | Z | Z | | | | | | | Z | Z | | | | |
| | 2 | Extr.Term. | 1492-IFM40D24-2 | — | — | | | | | | | | | | | | | Z | Z | | | | |
| | 2 | Extr.Term. (input) | 1492-IFM40D24A-2 | 1492-RIFM40D24A-2 | 1492-RTB20 \clubsuit | | | | | Z | Z | | | | | | | | | | | | |
| | 3 | Sensor | 1492-IFM40D24-3 | — | — | | | | | Z | Z | | | | | | | | | | | | |
| | 4 | Isolated | 1492-IFM40DS24-4 | — | — | | | | | | | | | | Y | Y ¹³ | Y | Y | | | | Y | Y |
| 120 | 2 | Extr.Term. (input) | 1492-IFM40D120A-2 | — | — | | | | Z | | | | | | | | | | | | | | |
| | 4 | Isolated | 1492-IFM40DS120-4 | — | — | | | | | | | | | Y | | | | | | | | Y | Y |
| | 4 | Isolated (input) | 1492-IFM40DS120A-4 | — | — | Y | | | | | | | | | | | | | | | | | |
| 240 | 4 | Isolated (input) | 1492-IFM40DS240A-4 | — | — | | | | | | | | Y | | | | | | | | | | |
| Fusible | | | | | | | | | | | | | | | | | | | | | | | |
| 24 | 2 | Blown fuse LED | 1492-IFM40F-F24-2 | 1492-RIFM40F-F24-2 | 1492-RTB20 \clubsuit | | | | | | | | | | | | | Z | Z | | | | |
| | 2 | Blown fuse LED | 1492-IFM40F-F24D-2 | — | — | | | | | | | | | | Y | | | | | | | | |
| | 4 | Blown fuse LED | 1492-IFM40F-F24AD-4 | — | — | | Y | | | | | | | | | | | | | | | | |
| 24... 120 | 2 | Extra Terminals | 1492-IFM40F-F-2 | — | — | | | | | | | | | | | | | Z | Z | | | | |
| Fusible - Isolated | | | | | | | | | | | | | | | | | | | | | | | |
| 24 | 2 | Extr. Term. | 1492-IFM40F-FS24-2 | — | — | | | | | | | | | Y | \clubsuit | Y ¹² | Y ¹² | | | | Y | Y | |
| | 4 | Blown fuse LED | 1492-IFM40F-FS24-4 | — | — | | | | | | | | | Y | \clubsuit | Y ¹² | Y ¹² | | | | Y | Y | |
| | 4 | Blown fuse LED (input) | 1492-IFM40F-FS24A-4 | — | — | \ddagger | Y | | | | | | | | | | | | | | | | |
| 24... 120 | 2 | Extr. Term. | 1492-IFM40F-FS-2 | — | — | | | | | | | | | Y | Y | Y | Y ¹² | Y ¹² | | | Y | Y | Y |
| | 4 | Extr. Term. | 1492-IFM40F-FS-4 | — | — | | | | | | | | | Y | Y | Y | Y ¹² | Y ¹² | | | Y | Y | Y |
| | 4 | Blown fuse LED (input) | 1492-IFM40F-FSA-4 | — | — | Y | Y | Y | | | Y | | | | | | | | | | | | |
| 120 | 2 | Blown fuse LED | 1492-IFM40F-FS120-2 | 1492-RIFM40F-FS120-2 | 1492-RTB20 \clubsuit | | | | | | | | | Y | | | | | | | Y | Y | Y |
| | 4 | Blown fuse LED | 1492-IFM40F-FS120-4 | 1492-RIFM40F-FS120-4 | 1492-RTB17 \clubsuit | | | | | | | | | Y | | | | | | | | Y | Y |
| | 4 | Blown fuse LED (input) | 1492-IFM40F-FS120A-4 | 1492-RIFM40F-FS120A-4 | 1492-RTB17 \clubsuit | Y | | | | | Y | | | | | | | | | | | | |
| 240 | 4 | Blown fuse LED | 1492-IFM40F-FS240-4 | — | — | | | | | | | | | Y | | | | | | | | Y | Y |
| | 4 | Blown fuse LED | 1492-IFM40F-FS240A-4 | — | — | | | | | | | | | Y | | | | | | | | | |
| Safety Integrity Level (SIL) ¹⁴ | | | | | | | | | | | | | | | | | | | | | | | |
| 24 | 2 | Blown fuse LED (input) | 1492-TIFM40F-F24A-2 | — | — | | | | | | | | | | | | | Z | Z | | | | |
| | 2 | Blown fuse LED | 1492-TIFM40F-24-2 | — | — | | | | | | | | | Y | | | | | | | | | |

See footnotes on the following page.



Programmable Controller Wiring Systems

Bulletin 1769 CompactLogix Modules

Digital IFMs and Cables for Bulletin 1769 CompactLogix 32-point I/O Expansion Modules

| Voltage [V] | Term. per I/O | Description | Fixed Terminal Block | Removable Terminal Block | RTB Plugs ❖ | Bulletin 1769 CompactLogix I/O Module | | | | |
|-----------------------|---------------|----------------------|--------------------------|--------------------------|----------------|---------------------------------------|-----------|------------|-----------|------------|
| | | | Cat. No. | Cat. No. | | Cat. No. | 1769-IC32 | 1769-IC32T | 1769-OB32 | 1769-OB32T |
| | | | | | | Digital Cable Cat. No. Suffix † | | | | |
| Feed-Through | | | | | | | | | | |
| 24...120 | 1 | Standard | 1492-IFM40F | 1492-RIFM40F | 1492-RTB20❖ | J69 | H | K69 | H | H |
| | 2 | Extr. Term. | 1492-IFM40F-2 | 1492-RIFM40F-2 | 1492-RTB20❖ | J69 | H | K69 | H | H |
| | 3 | Sensor | 1492-IFM40F-3 | — | — | J69 | H | | | |
| LED Indicating | | | | | | | | | | |
| 24 | 1 | Standard | 1492-IFM40D24 | 1492-RIFM40D24 | 1492-RTB20❖ | J69 | H | K69 | H | H |
| | 2 | Extr. Term. (output) | 1492-IFM40D24-2 | — | — | | | K69 | H | H |
| | | Extr. Term. (input) | 1492-IFM40D24A-2 | 1492-RIFM40D24A-2 | 1492-RTB20❖ | J69 | H | | | |
| | 3 | Sensor | 1492-IFM40D24-3 | — | — | J69 | H | | | |
| 24 | 2 | Extr. Term. | 1492-IFM40F-F24-2 | 1492-RIFM40F-F24-2 | 1492-RTB20❖ | | | K69 | H | H |
| 24...120 | 2 | Extr. Term. | 1492-IFM40F-F-2 | — | — | | | K69 | H | H |

See footnotes on the following page.



Programmable Controller Wiring Systems

Bulletin 1762 and 1764 MicroLogix Modules

Digital IFMs and Cables for Bulletin 1762 MicroLogix 1200 I/O

| Voltage [V] | Term. per I/O | Description | Bulletin 1762 MicroLogix1200 I/O Module | | | | | | | | |
|---------------|---------------|-------------|---|--------------------------|-------------|---------------------------------|--------------------|--------------------|---------------------|---------------------|---------------------|
| | | | Fixed Terminal Block | Removable Terminal Block | RTB Plugs ❖ | 1762-L40AWA Inputs | 1762-L40BWA Inputs | 1762-L40BWB Inputs | 1762-L40AWA Outputs | 1762-L40BWA Outputs | 1762-L40BWB Outputs |
| | | | Cat. No. | Cat. No. | Cat. No. | Digital Cable Cat. No. Suffix + | | | | | |
| Feed-Through* | | | | | | | | | | | |
| 120 | 1 | Standard | 1492-IFM40F | 1492-RIFM40F | 1492-RTB20❖ | A62 | A62 | A62 | B62 | B62 | B62 |
| | 2 | Extr. Term. | 1492-IFM40F-2 | 1492-RIFM40F-2 | | A62 | A62 | A62 | B62 | B62 | B62 |

❖ To order a Pre-wired Cable, add the **Suffix No.** from the table above to the end of the **Cat. No.** below.

- 0.5M Cable = 1492-CAB005_
- 1.0M Cable = 1492-CAB010_
- 2.5M Cable = 1492-CAB025_
- 5.0M Cable = 1492-CAB050_

Custom Length Cable = 1492-CABXXX_. See Catalog Number Explanation on page 12-136 for available Custom Length Codes to replace XXX in Cat. No.

❖ Order plugs separately (two plugs per catalog number). Plugs are available in screw style and push in style terminal types. To order, replace the ❖ in the catalog number with the code for the desired terminal style. The code for screw style is **N** and the code for push in style is **P**.

* When using this IFM module with the base I/O of the 1762 controller, the current rating of the outputs must be considered. Refer to Publication 1492-TD008 for details.

Digital IFMs and Cables for Bulletin 1764 MicroLogix 1500 I/O

| Voltage [V] | Term. per I/O | Description | Bulletin 1764 MicroLogix 1500 I/O Module | | | | | | | | |
|---------------|---------------|-------------|--|--------------------------|-------------|---------------------------------|-----------------|-----------------|------------------|------------------|------------------|
| | | | Fixed Terminal Block | Removable Terminal Block | RTB Plugs ❖ | 1764-AWA Inputs | 1764-BWA Inputs | 1764-BXB Inputs | 1764-AWA Outputs | 1764-BWA Outputs | 1764-BXB Outputs |
| | | | Cat. No. | Cat. No. | Cat. No. | Digital Cable Cat. No. Suffix + | | | | | |
| Feed-Through* | | | | | | | | | | | |
| 120 | 2 | Narrow | 1492-IFM20FN | 1492-RIFM20FN | 1492-RTB10❖ | A64 | A64 | B64 | C64 | C64 | F64 |
| 240 | 1 | Standard | 1492-IFM20F | 1492-RIFM20F | 1492-RTB20❖ | A64 | A64 | B64 | C64 | C64 | F64 |
| | 2 | Extr. Term. | 1492-IFM20F-2 | 1492-RIFM20F-2 | 1492-RTB20❖ | A64 | A64 | B64 | C64 | C64 | F64 |

❖ To order a Pre-wired Cable, add the **Suffix No.** from the table above to the end of the **Cat. No.** below.

- 0.5M Cable = 1492-CAB005_
- 1.0M Cable = 1492-CAB010_
- 2.5M Cable = 1492-CAB025_
- 5.0M Cable = 1492-CAB050_

Custom Length Cable = 1492-CABXXX_. See Catalog Number Explanation on page 12-136 for available Custom Length Codes to replace XXX in Cat. No.

❖ Order plugs separately (two plugs per catalog number). Plugs are available in screw style and push in style terminal types. To order, replace the ❖ in the catalog number with the code for the desired terminal style. The code for screw style is **N** and the code for push in style is **P**.

* When using this IFM module with the base I/O of the 1764 controller, the current rating of the outputs must be considered. Refer to Publication 1492-TD008 for details.

Programmable Controller Wiring Systems

Bulletin 1794 Flex I/O Modules

Digital IFMs and Cables for Bulletin 1794 Flex I/O 8-Point and 16-Point Modules

| Voltage [V] | Term. per I/O | Description | Fixed Terminal Block Cat. No. | Removable Terminal Block Cat. No. | RTB Plugs ❖ Cat. No. | Bulletin 1794 Flex Digital I/O Module ⌘ | | | | | | | | | | |
|--------------------------|---------------|-------------------------|----------------------------------|--------------------------------------|-------------------------|---|----------|---------------|-----------|-----------|------------|----------|------------|-----------|------------|----------|
| | | | | | | 1794-IB16 | 1794-IB8 | 1794-IB10XOB6 | 1794-IV16 | 1794-OB16 | 1794-OB16P | 1794-OB8 | 1794-OB8EP | 1794-OV16 | 1794-OV16P | 1794-OW8 |
| | | | | | | Digital Cable Cat. No. Suffix † | | | | | | | | | | |
| Feed-Through | | | | | | | | | | | | | | | | |
| 24... 120 | 1 | Standard | 1492-IFM20F | 1492-RIFM20F | 1492-RTB20❖ | A94 | A94 | A94 | A94 | A94 | A94 | A94 | A94 | A94 | A94 | A94 |
| | 1 | Narrow | 1492-IFM20FN | 1492-RIFM20FN | 1492-RTB10❖ | A94 | A94 | A94 | A94 | A94 | A94 | A94 | A94 | A94 | A94 | A94 |
| | 2 | Extr. Term. | 1492-IFM20F-2 | 1492-RIFM20F-2 | 1492-RTB20❖ | A94 | A94 | A94 | A94 | A94 | A94 | A94 | A94 | A94 | A94 | A94 |
| | 3 | Sensor | 1492-IFM20F-3 | — | — | A94 | A94 | | A94 | | | | | | | |
| LED Indicating | | | | | | | | | | | | | | | | |
| 24 | 1 | Standard | 1492-IFM20D24 | — | — | | | | | A94 | A94 | A94 | A94 | A94 | A94 | |
| | 1 | Narrow | 1492-IFM20D24N | — | — | A94 | A94 | | | A94 | A94 | A94 | A94 | | | |
| | 2 | Extr. Term. (output) | 1492-IFM20D24-2 | — | — | | | | | A94 | A94 | A94 | A94 | A94 | A94 | |
| | 2 | Extr. Term. (input) | 1492-IFM20D24A-2 | — | — | A94 | A94 | | A94 | | | | | | | |
| 120 | 4 | Isolated w/ Extr. Term. | 1492-IFM20DS24-4 | — | — | | | | | | | | | | | A94 |
| Fusible | | | | | | | | | | | | | | | | |
| 24 | 2 | Blown Fuse LED | 1492-IFM20F-F24-2 | 1492-RIFM20F-F24-2 | 1492-RTB20❖ | | | | | A94 | A94 | A94 | A94 | A94 | A94 | |
| | 2 | Blown Fuse LED (input) | 1492-IFM20F-F24A-2 | 1492-RIFM20F-F24A-2 | 1492-RTB20❖ | A94 | A94 | | | | | | | | | |
| 24... 120 | 2 | Blown Fuse LED | 1492-IFM20F-F-2 | 1492-RIFM20F-F-2 | 1492-RTB20❖ | | | | | A94 | A94 | A94 | A94 | A94 | A94 | |
| Fusible, Isolated | | | | | | | | | | | | | | | | |
| 24 | 2 | Blown Fuse LED | 1492-IFM20F-FS24-2 | — | — | | | | | | | | | | | A94 |
| 24... 120 | 2 | Extr. Term. (output) | 1492-IFM20F-FS-2 | — | — | | | | | | | | | | | A94 |
| 120 | 2 | Blown Fuse LED | 1492-IFM20F-FS120-2 | — | — | | | | | | | | | | | A94 |

Digital IFMs and Cables for Bulletin 1794 Flex I/O 16-Point and 32-Point Modules

| Voltage [V] | Term. per I/O | Description | Fixed Terminal Block Cat. No. | Removable Terminal Block Cat. No. | RTB Plugs ❖ Cat. No. | Bulletin 1794 Flex Digital I/O Module ➤ | | | |
|-----------------------|---------------|----------------------------|----------------------------------|--------------------------------------|-------------------------|---|-----------------|-----------|------------|
| | | | | | | 1794-IB16D | 1794-IB16XOB16P | 1794-IB32 | 1794-OB32P |
| | | | | | | Digital Cable Cat. No. Suffix † | | | |
| Feed-Through | | | | | | | | | |
| 24...120 | 1 | Standard | 1492-IFM40F | 1492-RIFM40F | 1492-RTB20❖ | B94 | B94 | B94 | B94 |
| | 2 | Extr. Term. | 1492-IFM40F-2 | 1492-RIFM40F-2 | 1492-RTB20❖ | B94 | B94 | B94 | B94 |
| LED Indicating | | | | | | | | | |
| 24 | 1 | Standard | 1492-IFM40D24 | 1492-RIFM40D24 | 1492-RTB20❖ | | | B94 | B94 |
| | 2 | Extr. Term. (output) | 1492-IFM40D24-2 | — | — | | | | B94 |
| | 2 | Extr. Term. (input) | 1492-IFM40D24A-2 | 1492-RIFM40D24A-2 | 1492-RTB20❖ | | | B94 | |
| Fusible | | | | | | | | | |
| 24 | 2 | Extr. Term. Blown Fuse LED | 1492-IFM40F-F24-2 | 1492-RIFM40F-F24-2 | 1492-RTB20❖ | | | | B94 |
| 24...120 | 2 | Extr. Term. (output) | 1492-IFM40F-F-2 | — | — | | | | B94 |

† To order a Pre-wired Cable, add the **Suffix No.** from the table above to the end of the **Cat. No.** below.

- 0.5M Cable = 1492-CAB005_
- 1.0M Cable = 1492-CAB010_
- 2.5M Cable = 1492-CAB025_
- 5.0M Cable = 1492-CAB050_

Custom Length Cable = 1492-CABXXX_. See Catalog Number Explanation on page 12-136 for available Custom Length Codes to replace XXX in Cat. No.

❖ Order plugs separately (two plugs per catalog number). Plugs are available in screw style and push in style terminal types. To order, replace the ❖ in the catalog number with the code for the desired terminal style. The code for screw style is **N** and the code for push in style is **P**.

⌘ Uses D-Shell Base 1794-TB37DS

➤ Uses D-Shell Base 1794-TB62DS



Programmable Controller Wiring Systems

Digital Cables — I/O Ready

Digital Cables — I/O-Ready for Bulletin 1756 ControlLogix-✳

| Cable Cat. No. | Standard Cable Lengths | Build-to-Order Available | No. of Conductors | Mating I/O Module Cat. No. |
|-------------------------|------------------------|--------------------------|-------------------|---|
| 1492-CABLE* TBNH | 1.0, 2.5, 5.0 m | Yes | 20 | 1756-IA8D, -IA16, -IB16, -IC16, -IN16, -IV16, -OA8, -OA8D, -OA8E, -OA16, -OB8, -OB16E, -OC8, -ON8, -OV16E |
| 1492-CABLE* TBCH | 1.0, 2.5, 5.0 m | Yes | 40 | 1756-IA16I, -IA32, -IB16D, -IB16I, -IB32, -IV32, -IH16I, -IM16I, -OA16I, -OB8EI, -OB16D, -OB16IS, -OB16I, -OB32, -OV32E, -OH8I, -OW16I, -OX8I |

* Cables are available in standard lengths of 1.0 m, 2.5 m, and 5.0 m. To order, insert the code for the desired cable length into the cat. no. (010 = 1.0 m, 025 = 2.5 m, and 050 = 5.0 m). Example: **Cat. No. 1492-CABLE050TBNH** is for a 5.0 m cable with a pre-wired Cat. No. 1756-TBNH RTB on one end.

✳ Discrete I/O read cables should not be used with PLC analog I/O modules as cable shield and drain wires are not provided.

Digital Cables - I/O-Ready for Bulletin 1769 CompactLogix-❖

| Cable Cat. No. | Standard Cable Lengths | Build-to-Order Available | No. of Conductors | Mating 1769 I/O Module Cat. No. |
|-------------------------|------------------------|--------------------------|-------------------|---|
| 1492-CAB* RTN10 | 1.0, 2.5, 5.0 m | Yes | 12 | 1769-OA8, -OW8, -OB8 |
| 1492-CAB* RTN18 | 1.0, 2.5, 5.0 m | Yes | 20 | 1769-IA8I, -IA16, -IQ16, IQ16F, -OA16, -OB16, -OV16, -OW16, -OW8I, -IM12, -OW16, -OB8 |
| 1492-CAB* RTN32I | 1.0, 2.5, 5.0 m | Yes | 40+ | 1769-IQ32 |
| 1492-CAB* RTN32O | 1.0, 2.5, 5.0 m | Yes | 40+ | 1769-OB32 |
| 1492-CABLE* N3 | 1.0, 2.5, 5.0 m | Yes | 40+ | 1769-IQ32T, -OB32T, -OV32T |

* Cables are available in standard lengths of 1.0, 2.5, and 5.0 m. To order, insert the code for the desired cable length into the cat. no. (010 = 1.0 m, 025 = 2.5 m, and 050 = 5.0 m). Example: **Cat. No. 1492-CAB050RTN10** is for a 5.0 m cable with a wired Cat. No. 1769-RTBN10 on one end.

+ Use #22 AWG wire.

❖ Discrete I/O ready cables should not be used with PLC analog I/O modules as a cable shield and drain wire are not provided.

Digital Cables — I/O-Ready for Bulletin 1762 MicroLogix 1200->

| Cable Cat. No. | Standard Cable Lengths | Build-to-Order Available | No. of Conductors | Mating 1762 Controller I/O Cable Cat. No. |
|----------------------|------------------------|--------------------------|-------------------|--|
| 1492-CAB* P62 | 1.0, 2.5, 5.0 m | No | 40 | 1762-OB32T and 1762-OV32T Output Expansion I/O |
| 1492-CAB* U62 | 1.0, 2.5, 5.0 m | No | 40 | 1762-IQ32T Input Expansion I/O |
| 1492-CAB* T62 | 1.0, 2.5, 5.0 m | Yes | 25 | 1762 -L40AWA Outputs, -L40BWA Outputs, -L40BxB Outputs |
| 1492-CAB* X62 | 1.0, 2.5, 5.0 m | Yes | 40 | 1762-L40AWA Inputs, -L40BWA Inputs, -L40BxB Inputs |

* I/O ready cables are available in standard lengths of 1.0, 2.5, and 5.0 m. To order, insert the code for the desired cable length into the cat. no. (010 = 1.0 m, 025 = 2.5 m, and 050 = 5.0 m). Example: **Cat. No. 1492-CAB010T62** is for a 1.0 m cable that could be used to connect a catalog number 1492-IFM40F to a catalog number 1762-L40AWA Input.

Digital Cables — I/O-Ready for Bulletin 1764 MicroLogix 1500 ->

| Cable Cat. No. | Standard Cable Lengths | Build-to-Order Available | No. of Conductors | Mating 1764 Base I/O Cat. No. |
|----------------------|------------------------|--------------------------|-------------------|-------------------------------|
| 1492-CAB* T64 | 1.0, 2.5, 5.0 m | Yes | 20‡ | AWA Outputs, BWA Outputs |
| 1492-CAB* U64 | 1.0, 2.5, 5.0 m | Yes | 20‡ | BXB Outputs |
| 1492-CAB* W64 | 1.0, 2.5, 5.0 m | Yes | 20§ | AWA Inputs, BWA Inputs |
| 1492-CAB* X64 | 1.0, 2.5, 5.0 m | Yes | 20§ | BXB Inputs |

* I/O ready cables are available in standard lengths of 1.0, 2.5, and 5.0 m. To order, insert the code for the desired cable length into the cat. no. (010 = 1.0 m, 025 = 2.5 m, and 050 = 5.0 m). Example: **Cat. No. 1492-CAB050T64** is for a 1.0 m cable that could be used to connect a catalog number 1492-IFM20F to a catalog number 1762-AWA Input.

‡ Uses #18 AWG wire.

§ Uses #22 AWG wire.

Digital Cables — I/O-Ready for Bulletin 1794 Flex I/O->

| Description | Standard Cable Lengths | Build-to-Order Available | No. of Conductors | Mating I/O Module Cat. No. |
|----------------------|------------------------|--------------------------|-------------------|--|
| 1492-CAB* G94 | 1.0, 2.5, 5.0 m | Yes | 20 | 1794-IB16, -IB8, -IV16, -OB16, -OB16P, -OB8, -OB8EP, -OV16, OV16P, -OW8, -IB10XOB8 |
| 1492-CAB* H94 | 1.0, 2.5, 5.0 m | Yes | 40 | 1794-IB16D, -IB32, OB32P, -IB16XOB16P |

* Cables are available in standard lengths of 1.0, 2.5, and 5.0 m. To order, insert the code for the desired cable length into the cat. no. (010 = 1.0 m, 025 = 2.5 m, and 050 = 5.0 m). Example: **Cat. No. 1492-CAB050G94** is for a 5.0 m cable.

> Not available for Analog I/O Modules

Digital IFM Specifications

| Digital IFM Cat. No. | Voltage Range | Dimensions (W x H x D) [in.]* | Indicator Circuit Current (Nominal) [mA] | Label Card Cat. No.® |
|---------------------------------------|------------------|-------------------------------|--|--|
| 1492-IFM20F, -RIFM20F | 0...264V AC/DC | 4.33 x 3.27 x 2.78† | — | 46006-190-01, 46006-233-01 |
| 1492-IFM20FN, -RIFM20FN | 0...132V AC/DC | 2.36 x 3.27 x 2.78† | — | 46006-197-01, -237-01, -220-01 |
| 1492-IFM20F-2, -RIFM20F-2 | 0...264V AC/DC | 4.33 x 3.27 x 2.78† | — | 46006-192-01, -235-01, -221-01 |
| 1492-IFM20F-3 | 0...132V AC/DC | 4.33 x 3.27 x 2.78 | — | 46006-210-01 |
| 1492-IFM20D24 | 10...30V AC/DC | 4.33 x 3.27 x 2.78 | 2 | 46006-190-01, 46006-233-01 |
| 1492-IFM20D24N | 10...30V AC/DC | 2.36 x 3.27 x 2.78 | 2 | 46006-197-01, -237-01, -220-01 |
| 1492-IFM20D24-2 | 10...30V AC/DC | 4.33 x 3.27 x 2.78 | 2 | 46006-192-01, -235-01, -221-01 |
| 1492-IFM20D24A-2 | 10...30V AC/DC | 4.33 x 3.27 x 2.78 | 2 | 46006-211-01 |
| 1492-IFM20DS24-4 | 10...60V AC/DC | 4.33 x 3.27 x 2.78 | 1.6 | 46006-209-01 |
| 1492-IFM20D24-3 | 10...30V AC/DC | 4.33 x 3.27 x 2.78 | 2 | 46006-193-01, 46006-236-01 |
| 1492-IFM20D120 | 85...132V AC/DC | 4.33 x 3.27 x 2.78 | 2.5 | 46006-190-01, 46006-233-01 |
| 1492-IFM20D120N | 85...132V AC | 2.36 x 3.27 x 2.78 | 2.5 | 46006-197-01, -237-01, -220-01 |
| 1492-IFM20D120-2 | 85...132V AC | 4.33 x 3.27 x 2.78 | 2.5 | 46006-192-01, -235-01 |
| 1492-IFM20D120A-2 | 85...132V AC | 4.33 x 3.27 x 2.78 | 2.5 | 46006-211-01 |
| 1492-IFM20DS120-4 | 85...132V AC | 4.33 x 3.27 x 2.78 | 2.6 | 46006-209-01 |
| 1492-IFM20D240-2 | 204...264V AC | 4.33 x 3.27 x 2.78 | 2.5 | 46006-192-01, -235-01 |
| 1492-IFM20D240A-2 | 204...264V AC | 4.33 x 3.27 x 2.78 | 2.5 | 46006-211-01 |
| 1492-IFM20F-F-2, -RIFM20F-F-2 | 0...132V AC/DC | 4.33 x 3.27 x 2.78† | — | 46006-192-01, -235-01, -221-01 |
| 1492-IFM20F-F24-2, -RIFM20F-F24-2 | 10...30V AC/DC | 4.33 x 3.27 x 2.78† | 2 | 46006-192-01, -235-01, -221-01 |
| 1492-IFM20F-F24A-2, -RIFM20F-F24A-2 | 10...30V AC/DC | 4.33 x 3.27 x 2.78† | 2.4 | 46006-212-01, -189-01 |
| 1492-IFM20F-F120-2, -RIFM20F-F120-2 | 85...132V AC | 4.33 x 3.27 x 2.78† | 2.5 | 46006-192-01, -235-01, -221-01 |
| 1492-IFM20F-F120A-2, -RIFM20F-F120A-2 | 85...132V AC/DC | 4.33 x 3.27 x 2.78† | 1.2 | 46006-212-01, -189-01 |
| 1492-IFM20F-F240-2 | 204...264V AC | 4.72 x 3.27 x 2.78 | 1.2 | 46006-192-01, -235-01 |
| 1492-IFM20F-FS-2 | 0...132V AC/DC | 2.36 x 3.27 x 2.78 | — | 46006-204-01 |
| 1492-IFM20F-FS24-2 | 10...30V AC/DC | 2.36 x 3.27 x 2.78 | 2 | 46006-204-01 |
| 1492-IFM20F-FS24A-4 | 10...30V AC/DC | 3.15 x 3.27 x 2.78 | 2.4 | 46006-215-01 |
| 1492-IFM20F-FS120-2 | 85...132V AC/DC | 2.36 x 3.27 x 2.78 | 2.5 | 46006-204-01 |
| 1492-IFM20F-FS120-4 | 85...132V AC/DC | 4.33 x 3.27 x 2.78 | 1.2 | 46006-214-01 |
| 1492-IFM20F-FS120A-4 | 85...132V AC/DC | 3.15 x 3.27 x 2.78 | 2.2 | 46006-215-01 |
| 1492-IFM20F-FS240-4 | 204...264V AC | 4.33 x 3.27 x 2.78 | 1.2 | 46006-214-01 |
| 1492-IFM40F, -RIFM40F | 0...132V AC/DC | 4.33 x 3.27 x 2.78† | — | 46006-191-01, -234-01, -252-01 |
| 1492-IFM40F-2 | 0...132V AC/DC | 8.27 x 3.27 x 2.78 | — | 46006-224-01, -225-01, -239-01, -240-01, -253-01 |
| 1492-RIFM40F-2 | 0...132V AC/DC | 9.05 x 3.27 x 2.78 | — | 46006-224-01, -225-01, -239-01, -240-01, -253-01 |
| 1492-IFM40F-3 | 0...60V AC/DC | 8.27 x 3.27 x 2.78 | — | 46006-193-01, 46006-236-01 |
| 1492-IFM40D24, -RIFM40D24 | 10...30V AC/DC | 4.33 x 3.27 x 2.78† | 2 | 46006-191-01, -234-01, -252-01 |
| 1492-IFM40D24-2 | 10...30V AC/DC | 8.27 x 3.27 x 2.78 | 2 | 46006-194-01, -195-01, -253-01 |
| 1492-IFM40D24A-2 | 10...30V AC/DC | 8.27 x 3.27 x 2.78 | 2 | 46006-224-01, -225-01, -239-01, -240-01, -253-01 |
| 1492-RIFM40D24A-2 | 10...30V AC/DC | 9.05 x 3.27 x 2.78 | 2 | 46006-224-01, -225-01, -239-01, -240-01, -253-01 |
| 1492-IFM40DS24-4 | 10...60V AC/DC | 6.69 x 3.27 x 2.78 | 4.1 | 46006-208-01 |
| 1492-IFM40DS24A-4 | 10...30V AC/DC | 6.69 x 3.27 x 2.78 | 4.1 | 46006-208-01 |
| 1492-IFM40D24-3 | 10...30V AC/DC | 8.27 x 3.27 x 2.78 | 2 | 46006-193-01, 46006-236-01 |
| 1492-IFM40D120-2 | 85...132V AC | 8.27 x 3.27 x 2.78 | 2.5 | 46006-194-01, -195-01, -253-01 |
| 1492-IFM40D120A-2 | 85...132V AC | 8.27 x 3.27 x 2.78 | 2.5 | 46006-194-01, -195-01, 253-01 |
| 1492-IFM40DS120-4 | 85...132V AC | 6.69 x 3.27 x 2.78 | 2.6 | 46006-208-01 |
| 1492-IFM40DS120A-4 | 85...132V AC | 6.69 x 3.27 x 2.78 | 2.6 | 46006-208-01 |
| 1492-IFM40DS240A-4 | 204...264V AC | 6.69 x 3.27 x 2.78 | 2.6 | 46006-208-01 |
| 1492-IFM40F-F-2 | 0...132V AC/DC | 8.27 x 3.27 x 2.78 | — | 46006-194-01, -195-01, -253-01 |
| 1492-IFM40F-F24-2 | 10...30V AC/DC | 8.27 x 3.27 x 2.78 | 2 | 46006-224-01, -225-01, -239-01, -240-01, 253-01 |
| 1492-RIFM40F-F24-2 | 10...30V AC/DC | 8.66 x 3.27 x 2.78 | 2 | 46006-224-01, -225-01, -239-01, -240-01, 253-01 |
| 1492-IFM40F-F24D-2 | 10...30V AC/DC | 4.72 x 3.27 x 2.78 | <0.05 | 46006-201-01 |
| 1492-IFM40F-F24AD-4 | 10...30V AC/DC | 7.09 x 3.27 x 2.78 | <0.05 | 46006-206-01 |
| 1492-IFM40F-F120-2 | 85...132V AC | 8.27 x 3.27 x 2.78 | 2.5 | 46006-194-001, -195-01, -253-01 |
| 1492-IFM40F-FS-2 | 0...132V AC/DC | 4.72 x 3.27 x 2.78 | — | 46006-201-01 |
| 1492-IFM40F-FS-4 | 0...264V AC/DC | 7.09 x 3.27 x 2.78 | — | 46006-207-01 |
| 1492-IFM40F-FS24-2 | 10...30V AC/DC | 4.72 x 3.27 x 2.78 | 2 | 46006-201-01 |
| 1492-IFM40F-FS24-4 | 10...30V AC/DC | 7.09 x 3.27 x 2.78 | 2.4 | 46006-207-01 |
| 1492-IFM40F-FS120-2, -RIFM40F-FS120-2 | 85...132V AC/DC | 4.72 x 3.27 x 2.78† | 2.5 | 46006-201-01 |
| 1492-IFM40F-FS120-4 | 85...132V AC/DC | 7.09 x 3.27 x 2.78 | 1.4 | 46006-206-01 |
| 1492-RIFM40F-FS120-4 | 85...132V AC/DC | 7.87 x 3.27 x 2.78 | 1.4 | 46006-226-01 |
| 1492-IFM40F-FS240-4 | 204...264V AC/DC | 7.09 x 3.27 x 2.78 | 2.4 | 46006-207-01 |
| 1492-IFM40F-FS24A-4 | 10...30V AC/DC | 7.09 x 3.27 x 2.78 | 3.1 | 46006-226-01 |
| 1492-IFM40F-FS120A-4 | 85...132V AC/DC | 7.09 x 3.27 x 2.78 | 1.4 | 46006-226-01 |
| 1492-RIFM40F-FS120A-4 | 85...132V AC/DC | 7.87 x 3.27 x 2.78 | 1.4 | 46006-226-01 |
| 1492-IFM40F-FSA-4 | 85...132V AC/DC | 7.09 x 3.27 x 2.78 | — | 46006-226-01 |
| 1492-IFM40F-FS240A-4 | 85...264V AC/DC | 7.09 x 3.27 x 2.78 | 1.4 | 46006-226-01 |
| 1492-TIFM40F-F24-2 | 24V DC | 8.66 x 3.27 x 2.74 | — | 46006-230-01 |
| 1492-TIFM40F-F24A-2 | 24V DC | 9.5 x 3.27 x 2.74 | 3 | 46006-230-01 |

* To convert to millimeters, multiply inches by 25.4

® Ships with each module. For spare part, precede the part number with the letter "W."

† Add 0.39 in. to the width dimension for Bulletin 1492-Rxxx modules.

